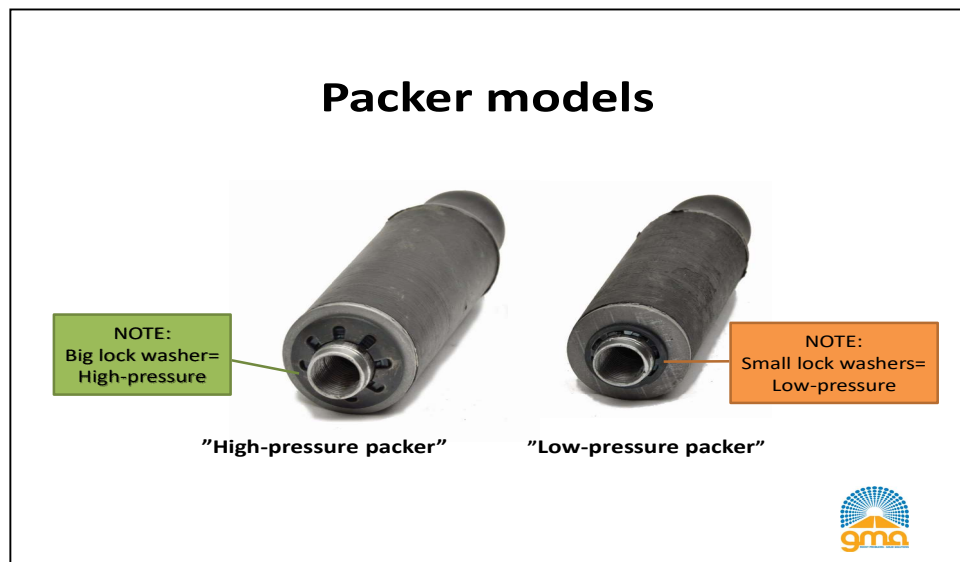


Safety information on low-pressure and high-pressure packers and intended injection tubes!

Respective packers must be put together with the correct injection tube, if not the packer will be damage (the lock washers), which means a safety hazard!

Packer models



Lock washers



Injection tubes

Injection tubes

High-pressure tube =

- Large welded nose at the end of the push pipe.
- Safety hook
- High-pressure valve
- Internal tube of high grade steel (not visible).



"High-pressure injection tube"

Low-pressure tube=

- Push pipe without welded nose in the end of the tube (only chamfer inside)
- No safety hook
- Regular ball valve

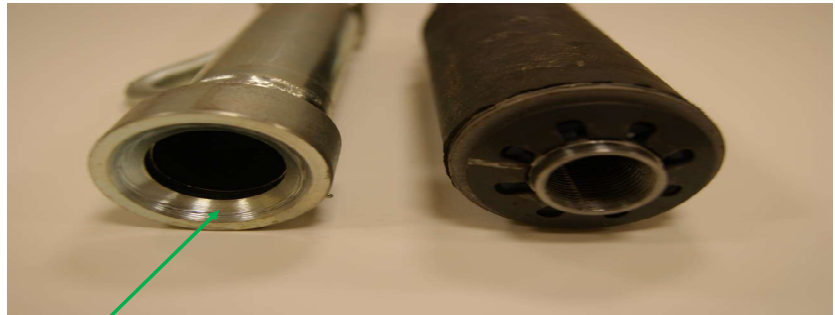


"Low-pressure injection tube"



Correct combination of high-pressure packer and high-pressure injection tube

Correct big tube ending and big lock washer for "High-pressure packers"



Angle and dimension of nose (tube ending) adapted to high-pressure washer

! NOTE: Wrong nose (push tube without welded nose) damages the large washer's "spring legs" and may not be used.



Correct combination of low-pressure packer and low-pressure injection tube

Correct tube ending (chamfer) and lock washers for "Low-pressure packers"



Chamfered push tube so the locking washers are not damaged during use.

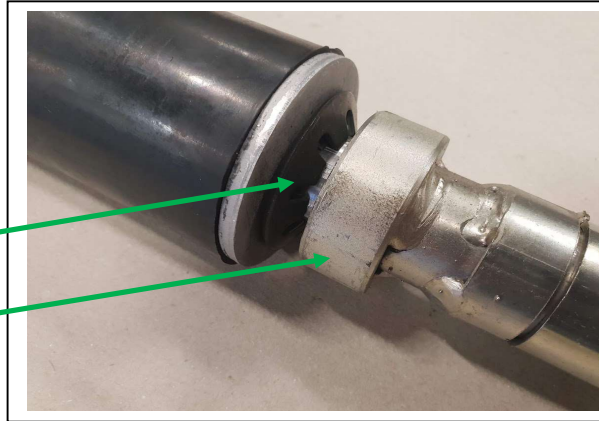
Do notice that chamfered push tube pressing the locking washers and not the end-washer of the packer.



Correct combination of high-pressure packer + high-pressure injection tube

Big lock washer

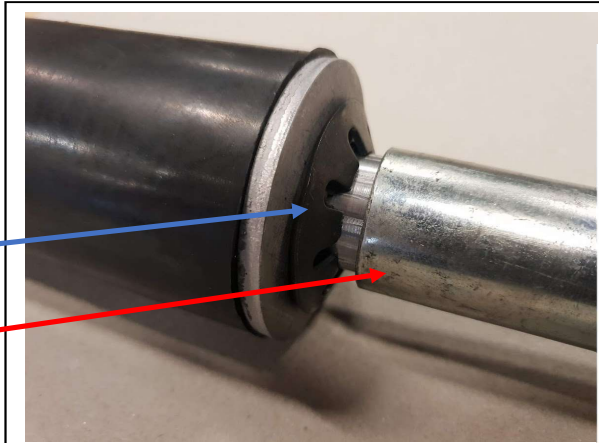
Big ending (nose) of push tube



!! Wrong combination of high-pressure packer and low-pressure injection tube

Big lock washer

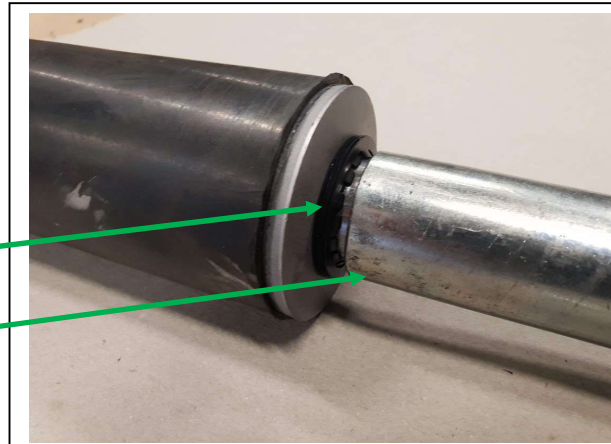
Small push tube (low-pressure tube with no nose)



Correct combination of low-pressure packer + low-pressure injection tube

Small lock washers

Only push tube (with chamfer inside)



!! Wrong combination of low-pressure packer and low-pressure injection tube

Small lock washers

Big end (high-pressure nose) of push tube

