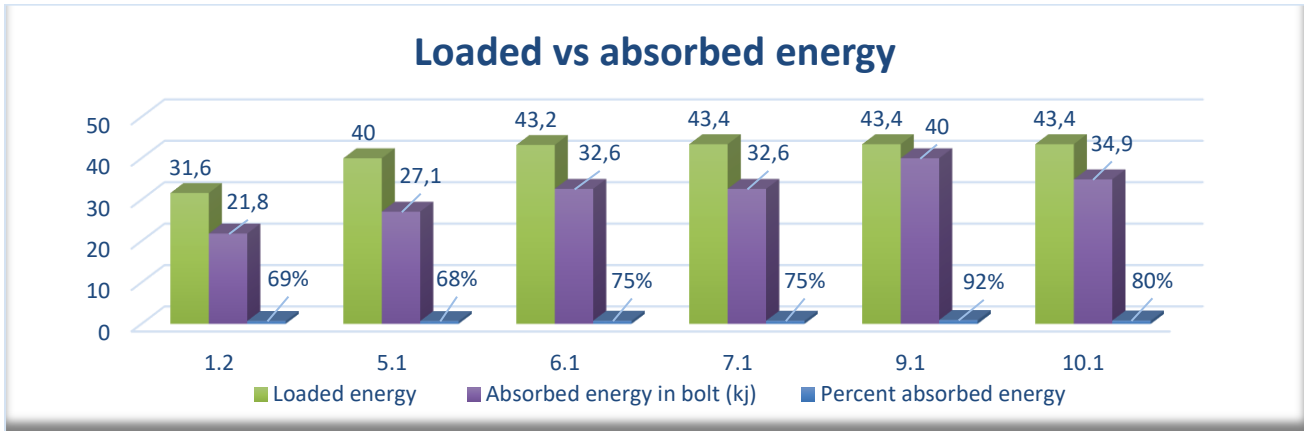
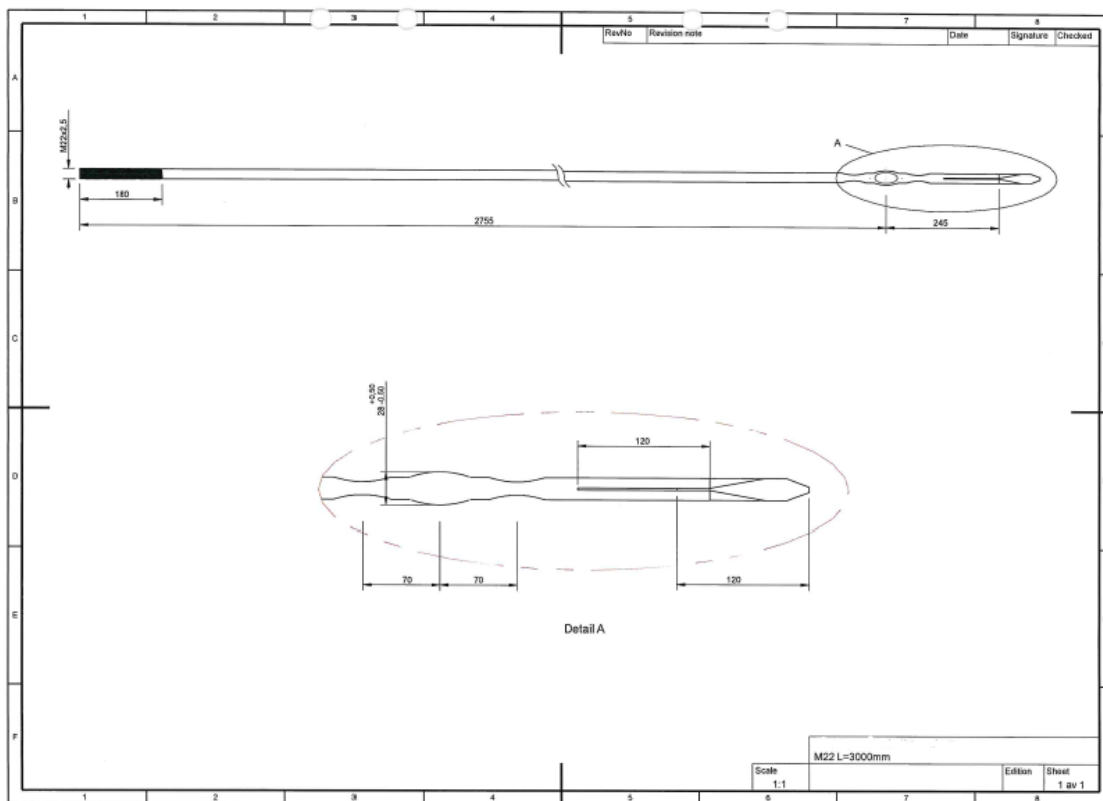


Comparison of Loaded – Absorbed Energy in Dynamic Drop Tests of GMA Rock Bolts Conducted February 25 – 28, 2020



Bolt no.	Bolt type	Bolt length [m]	Split/Cont	Drop mass [kg]	Charged energy [kJ]	Absorbed energy [kJ]	Measured plate displ. [mm]	Camera plate displ. [mm]	Bolt elong elastic [mm]	Released elastic energy after unloading [kJ]	Plate peak load [kN]	Failed Yes/No
1.2	1 anchor	3	C	1488	31,6	21,8	89	109	26,3	2,8	236,8	N
5.1	1 anchor	3	C	1888	40	27,1	120	113,6	19,5	2,0	231	N
6.1	1 anchor	3	C	2038	43,2	32,6	140	144,5	18,7	2,0	238,1	N
7.1	1 anchor	3	S	2048	43,4	32,6	156	158,1	17,4	1,8	221,6	N
9.1	1 anchor	3	S	2048	43,4	40	185	228,5	15,4	1,8	254,1	N
10.1	1 anchor	3	S	2048	43,4	34,9	147	157,6	20,1	1,9	234,5	N



Address Luleå
 Swerim AB
 Box 812, SE-971 25 Luleå, Sweden
Visiting address
 Aronstorpsvägen 1, SE-974 37 Luleå

Address Stockholm
 Swerim AB
 Box 7047, SE-164 07 Kista, Sweden
Visiting address
 Isafjordsgatan 28A, SE-164 40 Kista

Org.nr/VAT No.
 556585-4725
 SE 556585472501

Contact
 +46 (0)10 489 09 70
 info@swerim.se
 www.swerim.se

